

# ENGINEERS INSTRUCTION NO. M05

To: Citify

Attention: Gemma Broomfield

From: Phillip Dichiera Reference: LCE14462-042a

Project Name: Hyde Park Place – 248 Unley Road Apartments

Subject: Mechanical Engineers Instruction Date: 09/09/2020

The following changes are to be included within the project in regard to the laundry exhaust requirements. Mechanical Services Contractor shall note the following changes as defined below and confirm their understanding in relation to the revised arrangement.

## **Drawing LCE14610-M202**

- Provide Laundry cupboards with a Header box fan (performance data below) complete with wye piece to connect to exhaust system and flexible ductwork. Layouts are provided at the end of this document. New header box fans are to be provided to the following rooms:

Apt 1.01 Apt 1.02 Apt 1.03 Apt 1.04 Apt 1.05 Apt 1.06 Apt 1.07 Apt 1.08 Apt 1.09  
Apt 1.10 Apt 1.11 Apt 1.12 Apt 1.13 Apt 1.14 Apt 1.15

<b><u>Designation</u></b>	LEF-Apt X.XX
<b><u>Area Served</u></b>	Apt Laundry
<b><u>Fan Type</u></b>	Header Box Fan
<b><u>Air Quantity – L/s</u></b>	50
<b><u>Estimate ESP – Pa</u></b>	80
<b><u>Sound Pressure Level – dB(A)</u></b>	38
<b><u>Electrical Requirements – A/Ø/V</u></b>	0.81/1/220
<b><u>Speed Control</u></b>	Potentiometer

The Laundry Exhaust fan shall be connected to the controlled socket outlet provided by the electrical services contractor. The laundry panel shall be a labelled switch on the same switch panel as the lighting. Control switch plate by electrical services, final termination by mechanical services.

## **Drawing LCE14610-M203**

- Provide Laundry cupboards with a Header box fan (performance data below) complete with wye piece to connect to exhaust system and flexible ductwork. Layouts are provided at the end of this document. New header box fans are to be provided to the following rooms:

Apt 2.01   Apt 2.04   Apt 2.05   Apt 2.07   Apt 2.08   Apt 2.09   Apt 2.10

<b><u>Designation</u></b>	LEF-Apt X.XX
<b><u>Area Served</u></b>	Apt Laundry
<b><u>Fan Type</u></b>	Header Box Fan
<b><u>Air Quantity – L/s</u></b>	50
<b><u>Estimate ESP – Pa</u></b>	80
<b><u>Sound Pressure Level – dB(A)</u></b>	38
<b><u>Electrical Requirements – A/Ø/V</u></b>	0.81/1/220
<b><u>Speed Control</u></b>	Potentiometer

The Laundry Exhaust fan shall be connected to the controlled socket outlet provided by the electrical services contractor. The laundry panel shall be a labelled switch on the same switch panel as the lighting. Control switch plate by electrical services, final termination by mechanical services.

#### **Drawing LCE14610-M204**

- Provide Laundry cupboards with a Header box fan (performance data below) complete with wye piece to connect to exhaust system and flexible ductwork. Layouts are provided at the end of this document. New header box fans are to be provided to the following rooms:

Apt 3.02   Apt 3.04   Apt 3.05   Apt 3.06   Apt 3.08   Apt 3.09   Apt 3.10   Apt 3.11

<b><u>Designation</u></b>	LEF-Apt X.XX
<b><u>Area Served</u></b>	Apt Laundry
<b><u>Fan Type</u></b>	Header Box Fan
<b><u>Air Quantity – L/s</u></b>	50
<b><u>Estimate ESP – Pa</u></b>	80
<b><u>Sound Pressure Level – dB(A)</u></b>	38
<b><u>Electrical Requirements – A/Ø/V</u></b>	0.81/1/220
<b><u>Speed Control</u></b>	Potentiometer

The Laundry Exhaust fan shall be connected to the controlled socket outlet provided by the electrical services contractor. The laundry panel shall be a labelled switch on the same switch panel as the lighting. Control switch plate by electrical services, final termination by mechanical services.

**Drawing LCE14610-M205**

- Provide Laundry cupboards with a Header box fan (performance data below) complete with wye piece to connect to exhaust system and flexible ductwork. Layouts are provided at the end of this document. New header box fans are to be provided to the following rooms:

Apt 4.02   Apt 4.05   Apt 4.06   Apt 4.08   Apt 4.09   Apt 4.10   Apt 4.12

<b><u>Designation</u></b>	LEF-Apt X.XX
<b><u>Area Served</u></b>	Apt Laundry
<b><u>Fan Type</u></b>	Header Box Fan
<b><u>Air Quantity – L/s</u></b>	50
<b><u>Estimate ESP – Pa</u></b>	80
<b><u>Sound Pressure Level – dB(A)</u></b>	38
<b><u>Electrical Requirements – A/Ø/V</u></b>	0.81/1/220
<b><u>Speed Control</u></b>	Potentiometer

The Laundry Exhaust fan shall be connected to the controlled socket outlet provided by the electrical services contractor. The laundry panel shall be a labelled switch on the same switch panel as the lighting. Control switch plate by electrical services, final termination by mechanical services.

**Drawing LCE14610-M206**

- Provide Laundry cupboards with a Header box fan (performance data below) complete with wye piece to connect to exhaust system and flexible ductwork. Layouts are provided at the end of this document. New header box fans are to be provided to the following rooms:

Apt 5.02   Apt 5.05   Apt 5.06   Apt 5.08   Apt 5.09   Apt 5.10   Apt 5.12

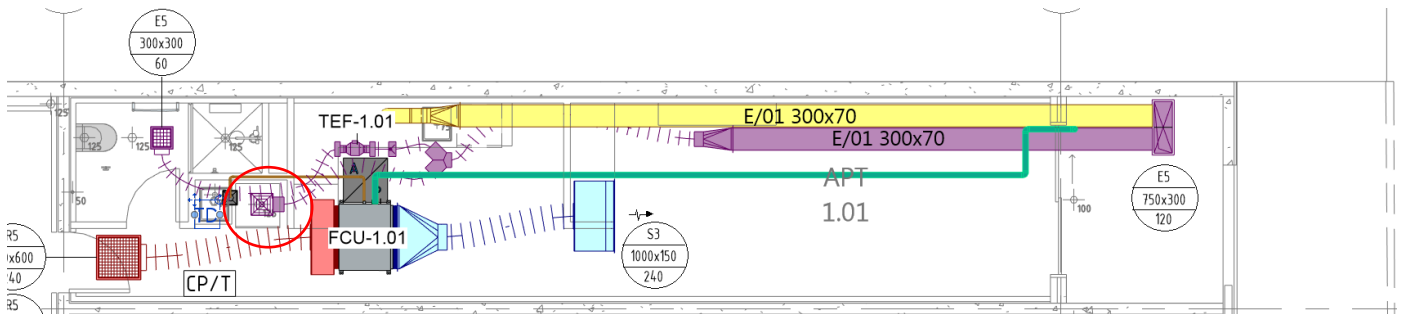
<b><u>Designation</u></b>	LEF-Apt X.XX
<b><u>Area Served</u></b>	Apt Laundry
<b><u>Fan Type</u></b>	Header Box Fan
<b><u>Air Quantity – L/s</u></b>	50
<b><u>Estimate ESP – Pa</u></b>	80
<b><u>Sound Pressure Level – dB(A)</u></b>	38
<b><u>Electrical Requirements – A/Ø/V</u></b>	0.81/1/220

**Speed Control**

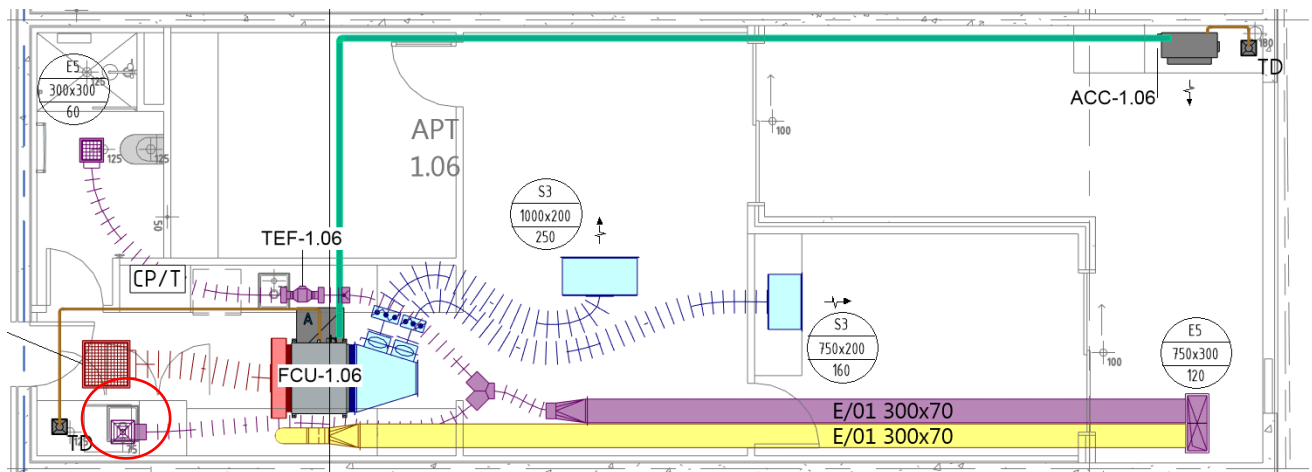
Potentiometer

The Laundry Exhaust fan shall be connected to the controlled socket outlet provided by the electrical services contractor. The laundry panel shall be a labelled switch on the same switch panel as the lighting. Control switch plate by electrical services, final termination by mechanical services.

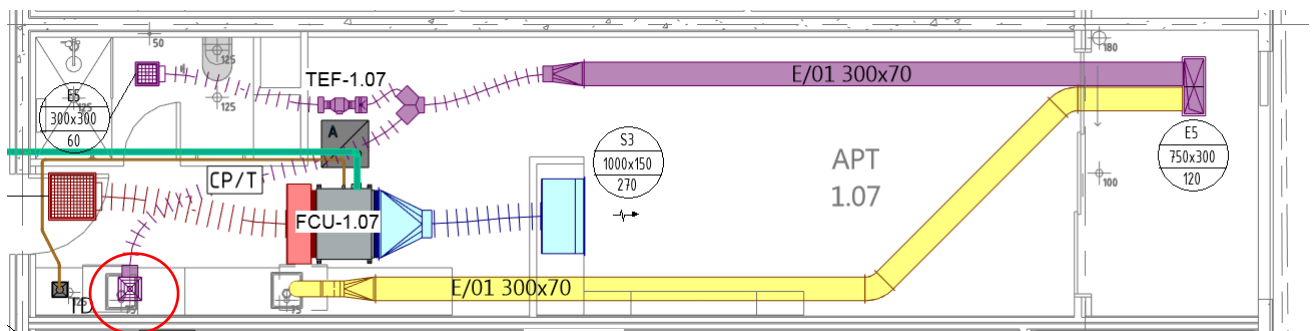
**Layout Apt 1.01, Apt 1.02 Apt1.03, Apt 1.04, Apt 1.05, Apt 1.12, Apt 1.13, Apt 1.14 and Apt 1.15**



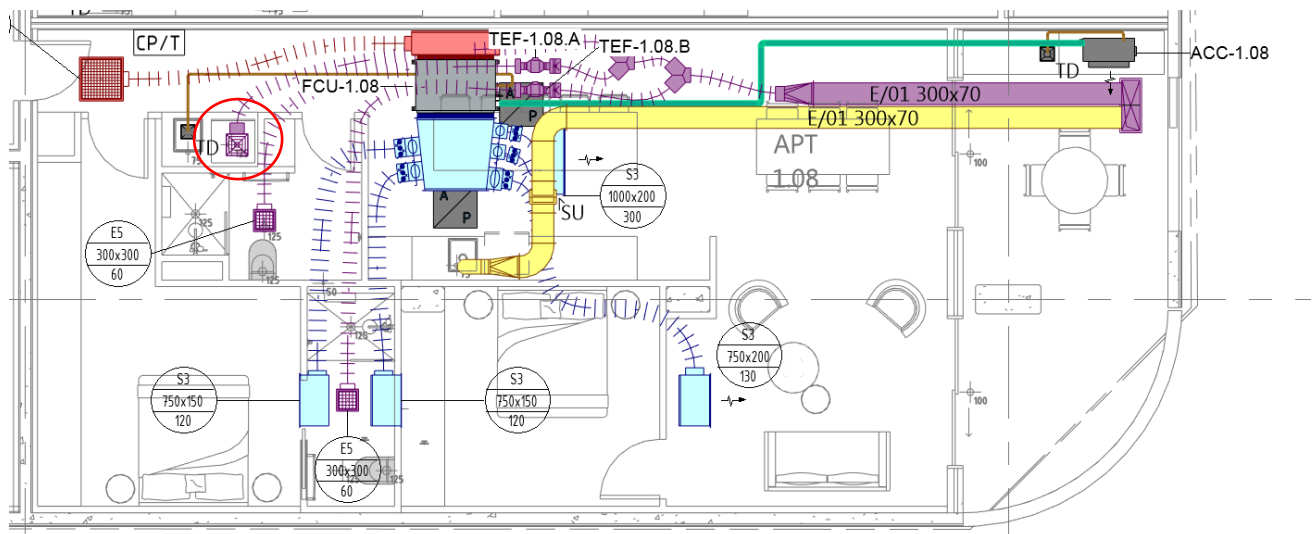
**Layout Apt 1.06**



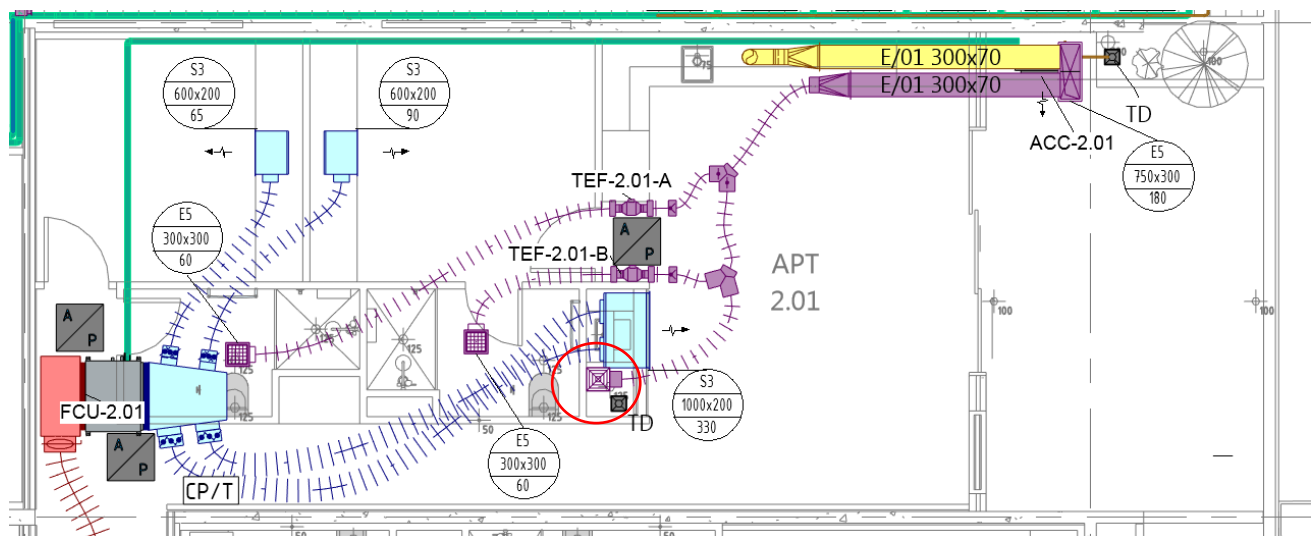
**Layout Apt 1.07, Apt 1.10 and Apt 1.11**



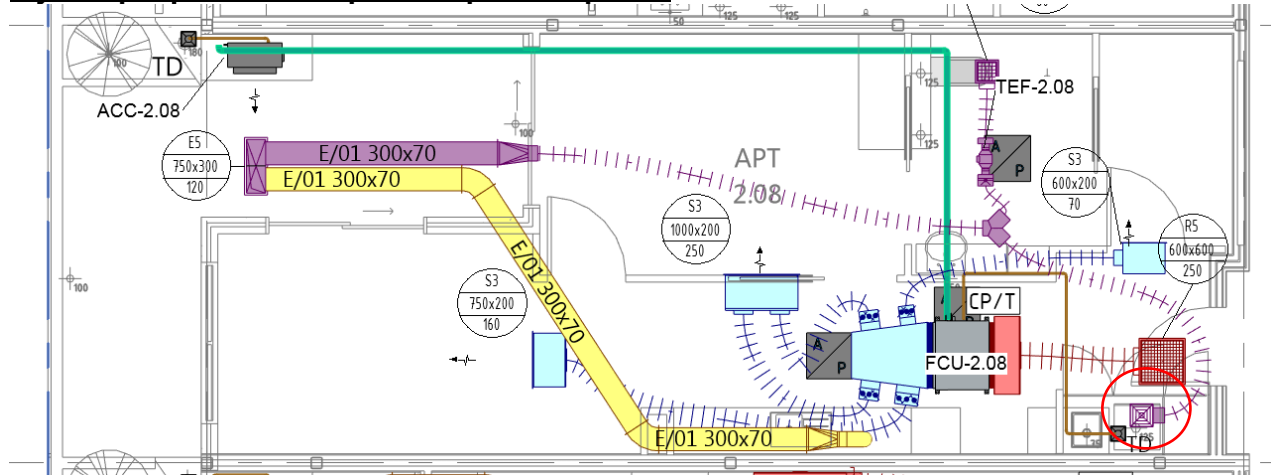
**Layout Apt 1.08**



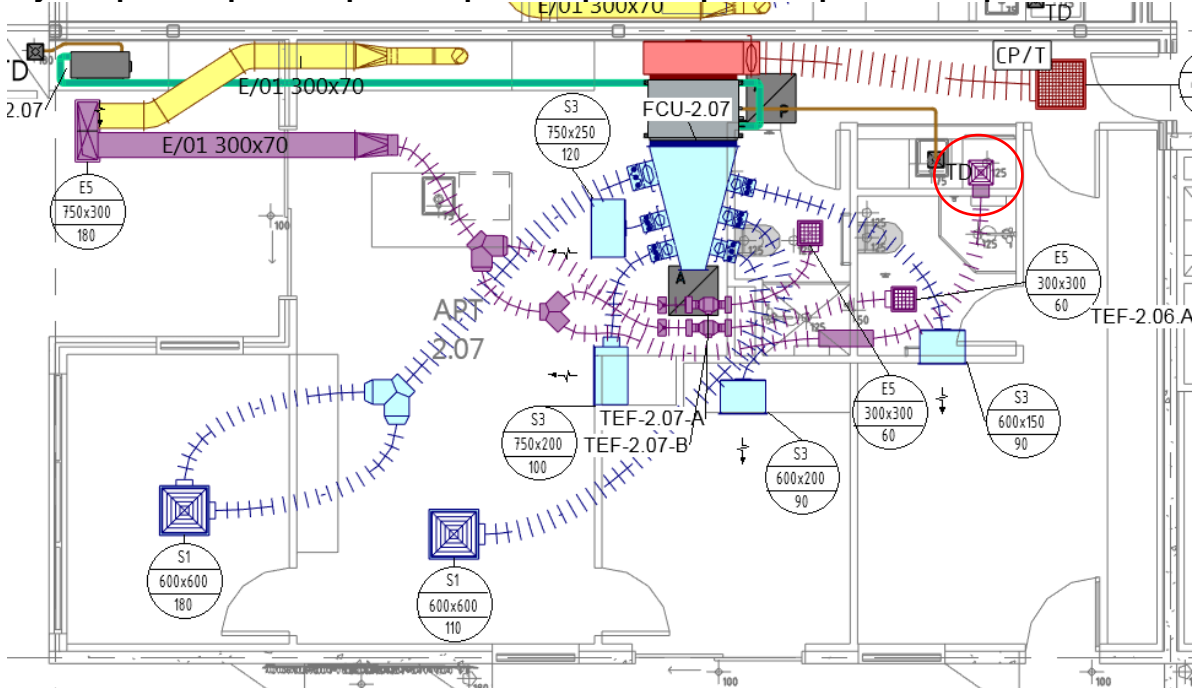
**Layout Apt 2.01, Apt 3.02, Apt 4.02 and Apt 5.02**



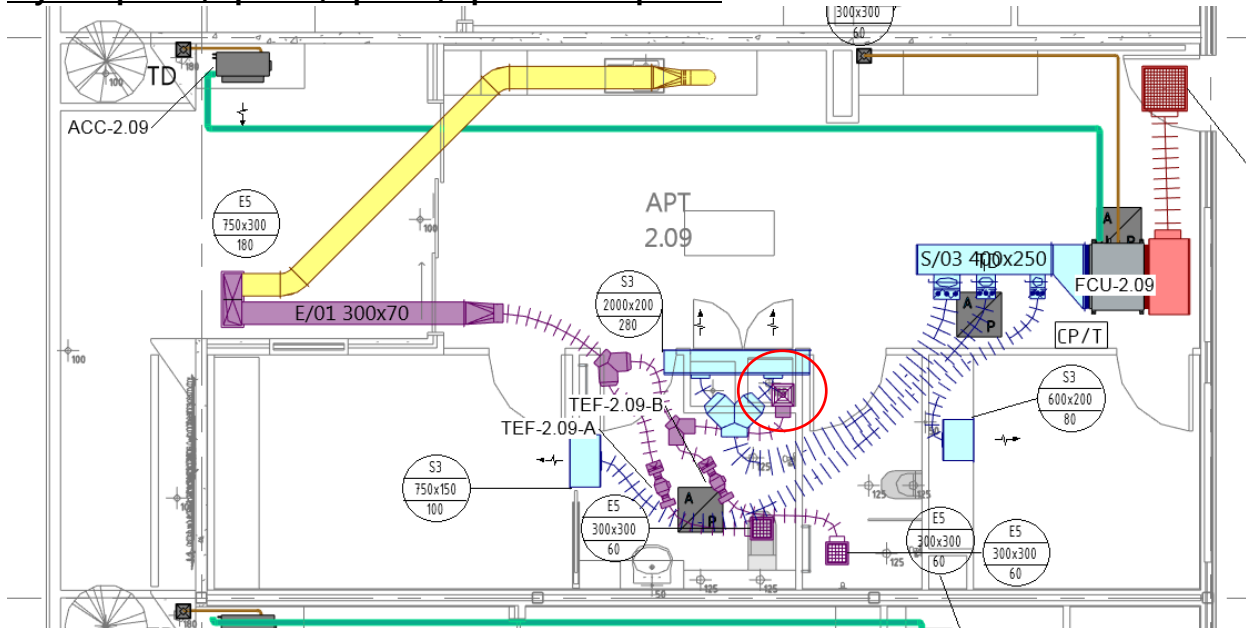
**Layout Apt Apt 2.04 2.08, Apt 4.05, Apt 4.09, Apt 5.05**



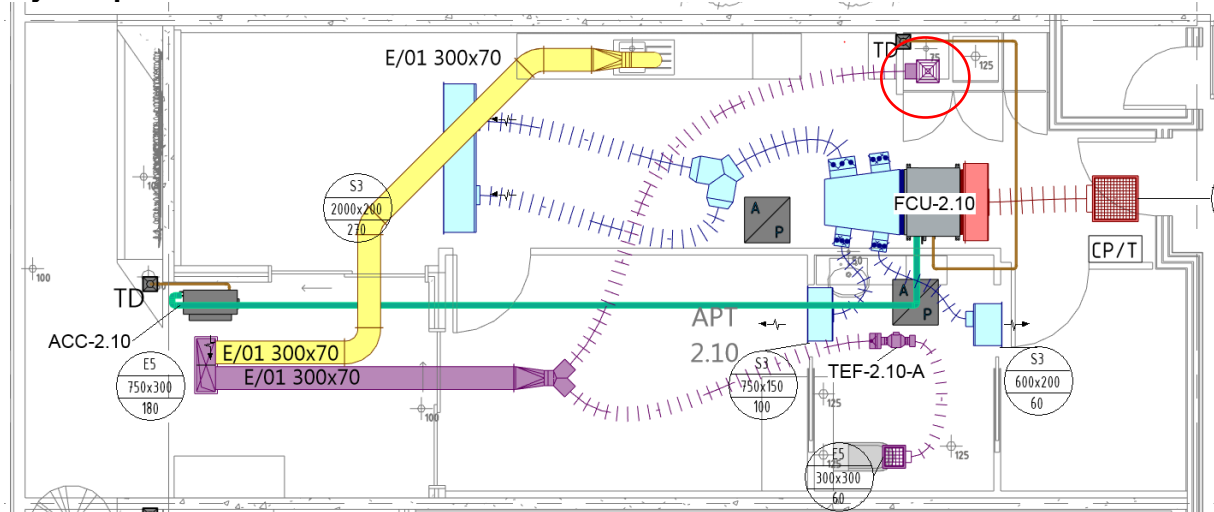
**Layout Apt 2.05 Apt 2.07, Apt 3.06, Apt 3.08, Apt 4.06, Apt 4.08, Apt 5.06 and Apt.508**



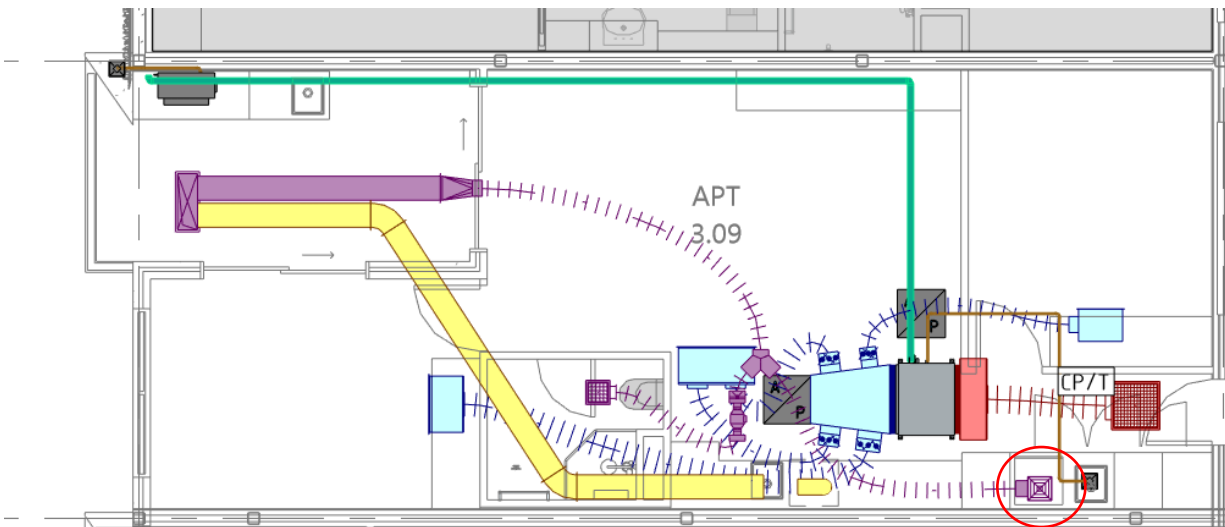
**Layout Apt 2.09, Apt 3.04, Apt 3.10, Apt 4.10 and Apt 5.10**



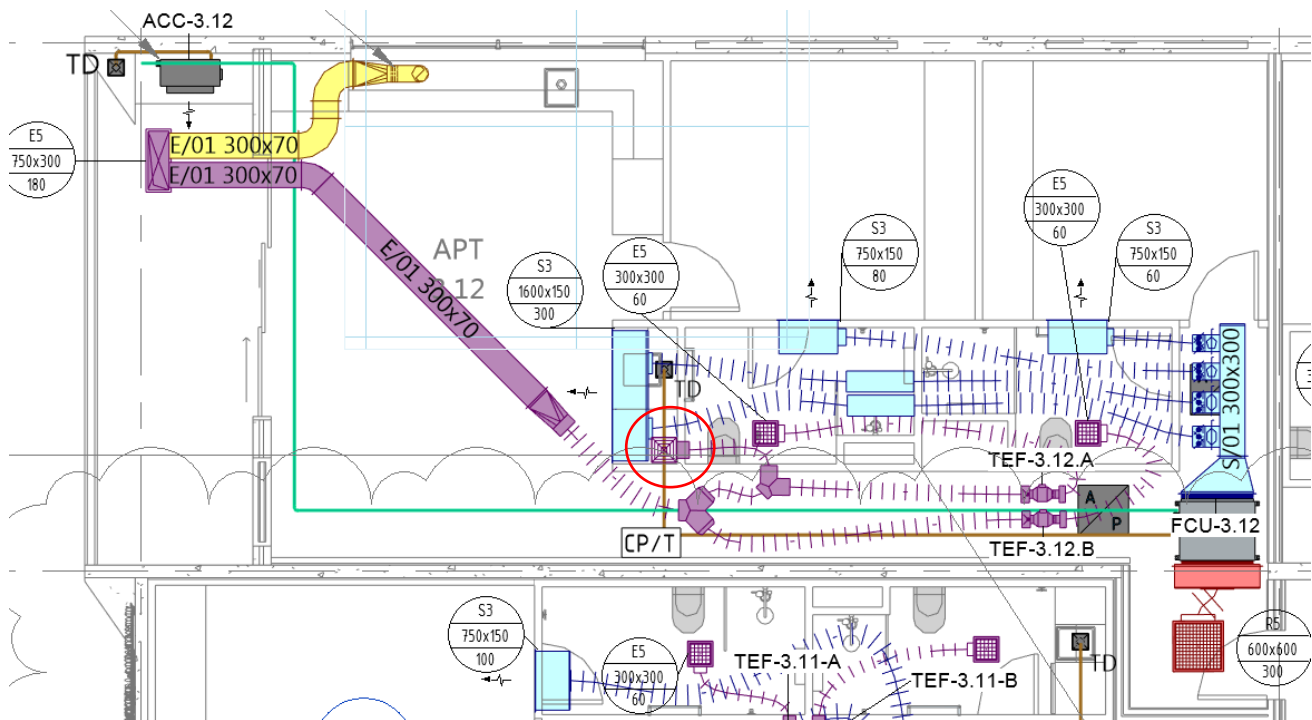
**Layout Apt 2.10**



**Layout Apt 3.05, Apt 3.09 and Apt 5.09**



**Layout Apt 3.12, Apt 4.12 and Apt 5.12**



- Undertake works in accordance with the Specification.
- If Price Variation is applicable, submit for approval prior to commencing works.